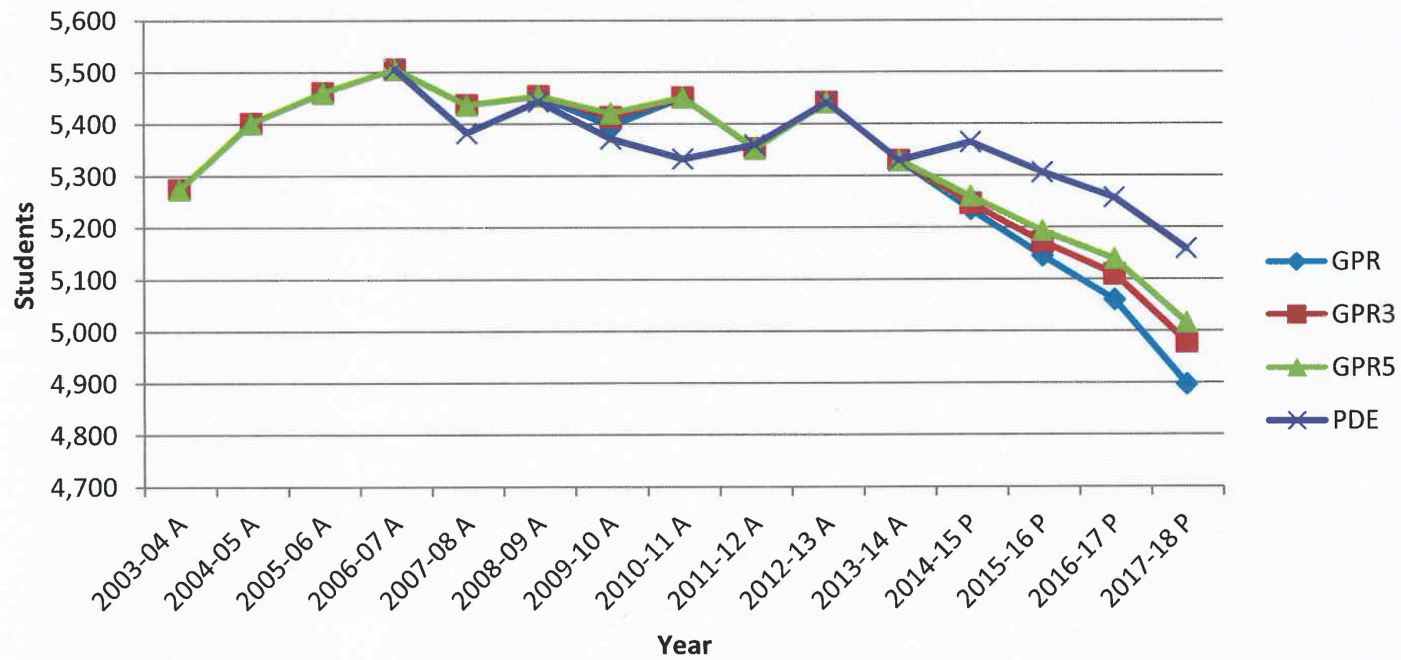


Projected Total Enrollment - 4 Methods



Enrollment Statistics 2013-14
2014-15 Projection Comparison

Grades	LB w/GPR	LB3 w/GPR3	LB w/GPR5	PDE
K	299	305	299	342
1	392	388	386	450
2	425	415	415	459
3	403	407	404	443
4	391	400	397	426
5	397	405	406	407
K-5 Total	2307	2320	2307	2527
6	393	409	417	422
7	415	417	419	424
8	389	384	388	390
6-8 Total	1197	1210	1224	1236
9	389	393	401	413
10	437	425	424	440
11	390	387	387	374
12	375	372	377	374
9-12 Total	1591	1577	1589	1601
Special Ed.	139	139	139	Included
Total K-12	5234	5246	5259	5364

QUAKERTOWN COMMUNITY SCHOOL DISTRICT
Live Births by Municipality

Year	Haycock	Milford	Quakertown	Richland	Richlandtown	Trumbauersville	Total
1960	21	81	132	77	11	17	339
1961	20	73	126	72	14	12	317
1962	21	81	108	67	14	17	308
1963	15	75	114	75	13	21	313
1964	22	73	129	81	19	19	343
1965	23	79	98	74	12	19	305
1966	17	76	104	74	22	19	312
1967	16	71	109	56	15	15	282
1968	17	68	106	69	12	14	286
1969	22	56	135	63	12	5	293
1970	14	59	119	74	16	16	298
1971	19	79	109	75	16	13	311
1972	19	77	148	68	11	9	332
1973	13	50	123	86	14	10	296
1974	22	70	109	88	10	12	311
1975	21	48	128	79	11	6	293
1976	16	65	114	95	17	9	316
1977	12	53	142	87	12	19	325
1978	25	74	191	89	20	14	413
1979	21	68	187	77	26	5	384
1980	23	88	193	106	18	10	438
1981	20	91	171	124	18	20	444
1982	20	89	195	103	21	16	444
1983	23	55	181	102	22	12	395
1984	25	88	176	93	19	21	422
1985	20	69	165	115	24	15	408
1986	26	91	172	107	14	16	426
1987	27	106	159	124	16	15	447
1988	27	76	198	119	17	10	447
1989	26	82	183	125	21	8	445
1990	19	79	178	137	21	8	442
1991	28	86	153	129	9	12	417
1992	14	78	153	141	15	8	409
1993	18	79	148	107	17	8	377
1994	30	88	160	128	12	5	423
1995	23	90	156	127	8	5	409
1996	21	80	158	132	12	5	408
1997	18	96	164	135	16	8	437
1998	28	104	126	129	9	11	407
1999	21	112	116	164	9	6	428
2000	17	97	135	128	12	9	398
2001	18	105	124	149	6	9	411
2002	21	101	122	180	15	9	448
2003	10	118	152	190	17	15	502
2004	18	112	151	206	15	14	516
2005	14	110	140	208	18	12	502
2006	21	105	165	189	21	12	513
2007	21	91	161	218	20	14	525
2008	19	105	158	191	19	14	506
2009	4	95	133	171	20	11	434
2010	12	89	128	194	28	12	463
2011	15	97	139	182	14	19	466
2012	6	75	131	174	14	7	407

Data Source: Division of Health Statistics and Research
 Pennsylvania Department of Health - Live Births
 The Department specifically disclaims responsibility for any analyses, interpretations, or conclusions.

Updated 1-9-14